

SMAD4 (D351H)

Catalog Number: 26418

Gene Symbol: SMAD4, DPC4, JIP, MADH4, MYHRS

Description: Anti-SMAD4 (D351H) Mouse Monoclonal Antibody

Background: SMAD4 family member 4, also known as SMAD4, is a protein that in human is encoded by the SMAD4 gene. It is often found mutated in many cancers. It acts as a tumor suppressor that functions in the regulation of the TGF- β signal transduction pathway, which negatively regulates growth of epithelial cells and the extracellular matrix (ECM). SMAD4 alterations have been found in multiploid colorectal cancer and pancreatic carcinoma. It is found inactivated in at least 50% of pancreatic cancers. It is also found mutated in the autosomal dominant disease juvenile polyposis syndrome (JPS).

Immunogen: A synthetic peptide from the internal region of SMAD4, which includes the mutation of D351H, human origin.

Tested Applications: ELISA, WB, IHC

Recommended Dilutions:

ELISA: 1:1000-1:2000

WB: 1:500-1:1000

IHC: 1:50-1:100

Concentration: 1 mg/ml

Host: Mouse

Clonality: Monoclonal

Purity: Purified from ascites

Format: Liquid

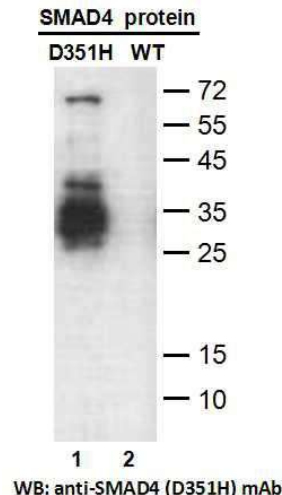
Preservative: No

Constituents: PBS (without Mg²⁺ and Ca²⁺), pH 7.4, 150 mM NaCl and 50% glycerol

Species Reactivity: Recognizes D351H mutant, but not wild type SMAD4 of vertebrates.

Storage Conditions: Store at -20°C. Avoid freeze / thaw cycles.

Western blot:

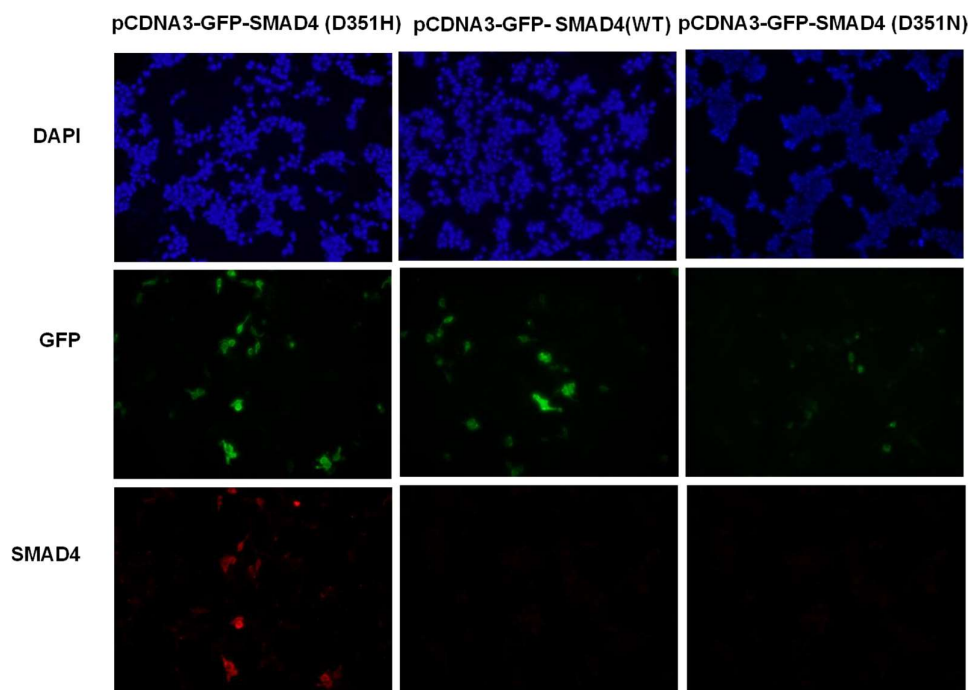


Western blot analysis of recombinant SMAD4 (D351H) and wild type proteins.

Purified His-tagged SMAD4 (D351H) protein (lane 1) and corresponding wild type protein (1-552 aa, 65 kd) (lane 2) were blotted with anti-SMAD4 (D351H) monoclonal antibody (Cat. # 26418).

FOR RESEARCH USE ONLY. NOT FOR DIAGNOSTIC APPLICATIONS

Immunofluorescence:



Immunofluorescence of cells expressing SMAD4 proteins with anti-SMAD4 (D351H) antibody.

HEK293T cells were transfected with pCDNA3-GFP-SMAD4 (D351H) plasmid, pCDNA3-GFP-SMAD4 (WT) plasmid or pCDNA3-GFP-SMAD4 (D351N) plasmid, then fixed and stained with anti-SMAD4 (D351H) monoclonal antibody (Cat. # 26418).

FOR RESEARCH USE ONLY. NOT FOR DIAGNOSTIC APPLICATIONS